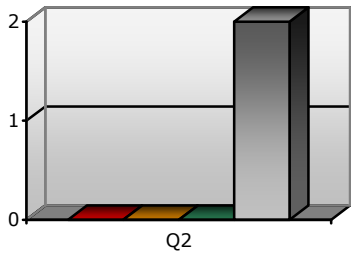
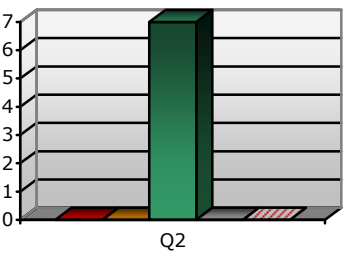




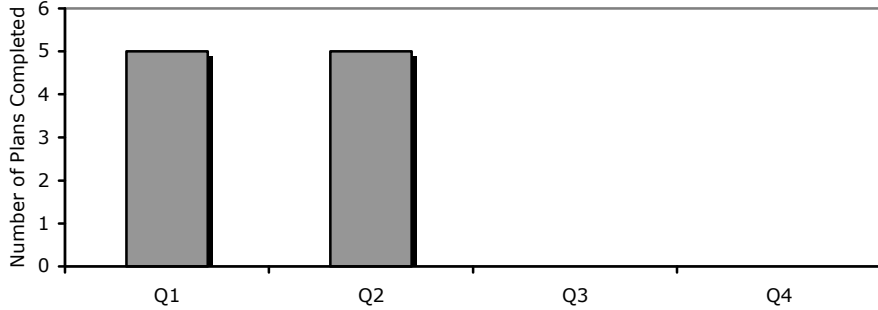
Partnership Delivery Plan Performance Report

1 April 2011 to 30 September 2011
Quarter 2 – 2011/12

Key:							
Indicators			Both		Actions		
Red – performance is not meeting target	Amber – not meeting target but within tolerance	Green – on target	Not due to be reported or no target set	No data or update provided	Delivery against the action should have started however no progress has been made or the action is in progress but the action will not be delivered within the timescales identified.	The action is in progress but it is uncertain if the action will be delivered within the timescale identified.	The action is in progress and will be delivered within the timescale identified.

Network	Key Messages	Indicator Performance	Action Performance
Climate Change and Environment	The £6-million Lincshore project has finished for another year, with 400,000 cubic metres of sand pumped onto 20km of beach. This is the second year of a five-year programme that will see £30-million spent protecting the coastline.		
Champion	The EA, along with other partners, supported East Lindsey District Council to raise awareness of coastal flooding using a flash mob in Mablethorpe. The flash mob was performed by more than 300 school children from Tennyson High School, Mablethorpe.		
Simon Mitchell, Environment Agency			

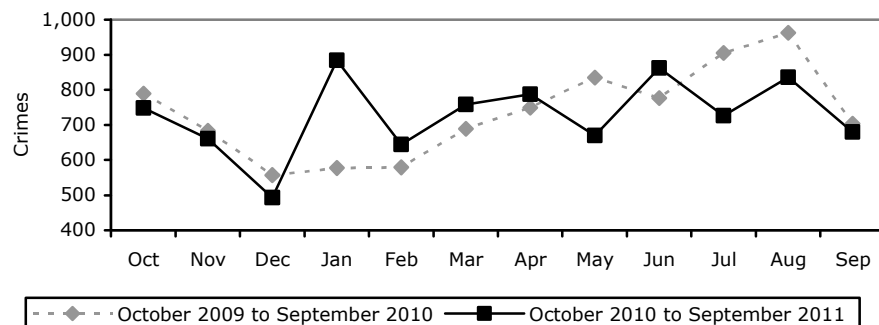
Exceptions				Key Indicators		
Ref	Description	Lead Person & Partner	Description of Issue and Suggested Course of Action	Ref	Description	Performance
None				0.01	Total annual reduction of CO ₂ emissions achieved through climate change/energy efficiency projects	Not due to be reported this quarter
				0.02	Number of community flood risk plans in East Lindsey	For info. only

<p>O.01 – Total annual reduction of CO₂ emissions achieved through climate change/energy efficiency projects – Patricia Sumner, East Lindsey DC</p> <p>No data currently available – due to report in Quarter 4</p>		<p>O.02 – Number of community flood risk plans in East Lindsey (Cumulative) Gemma Mitchell, Environment Agency</p> 	
	<p>Performance: N/A</p> <p>Trend: N/A</p>	<p>All previous 25 plans still in development. Community flood risk plan has been merged with the LRF community emergency plan, forming a new Community Emergency & Flood Plan. Currently developing ways of supporting communities on completing plans.</p>	<p>Performance: 5</p> <p>Trend: ☺</p>

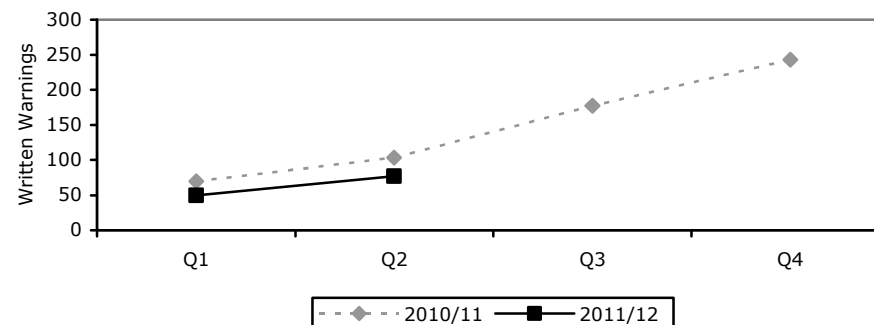
Network	Key Messages	Indicator Performance	Action Performance
Community Safety	A countywide consultation on community safety structures in Lincolnshire will take place during October/November 2011. All relevant partners are encouraged to feed their views into the consultation to enable the Community Safety Board to reach a decision on 8th December 2011.		
Champion			
Daryl Pearce, Lincolnshire Police			

Exceptions				Key Indicators		
Ref	Description	Lead Person & Partner	Description of Issue and Suggested Course of Action	Ref	Description	Performance
2.2	Deliver the 'Street Smart' programme in East Lindsey	Jonathan Challen, East Lindsey District Council	Work on the Street Smart project has been delayed due to implementation of the Changing Attitudes, Changing Behaviour programme.	S.03	Recorded crime per 1,000 population	For info. only
				O.06a	Number of anti-social behavior investigations begun with issue of written warning	For info. only
				O.06b	Number of anti-social behavior investigations progressing to an anti-social behavior order	For info. only

S.03 – Recorded crime per 1,000 population (shown as monthly crimes below)
Daryl Pearce, Lincolnshire Police



O.06a – Number of anti-social behaviour investigations begun with the issue of a written warning (Cumulative) - Daryl Pearce, Lincolnshire Police



The all crime figures for East Lindsey in Quarter 2 show that it is currently below the level seen at the same point last year (35.02) and remains below the county average (32.58).

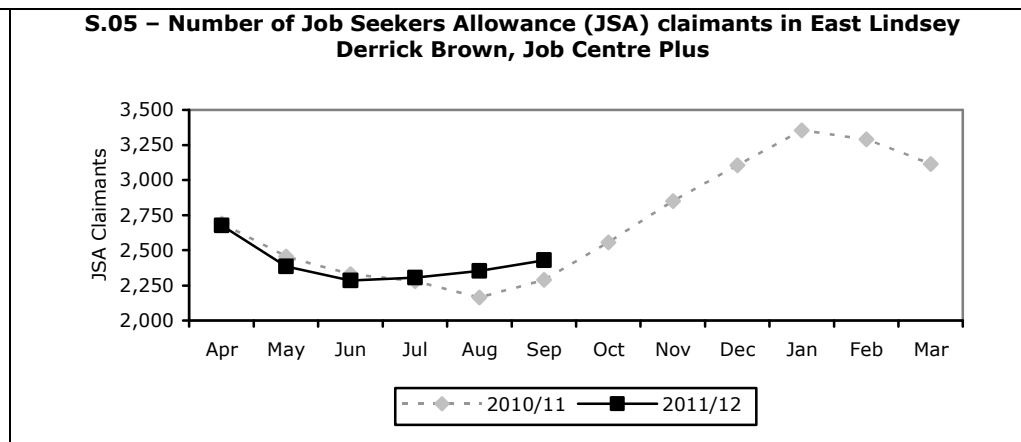
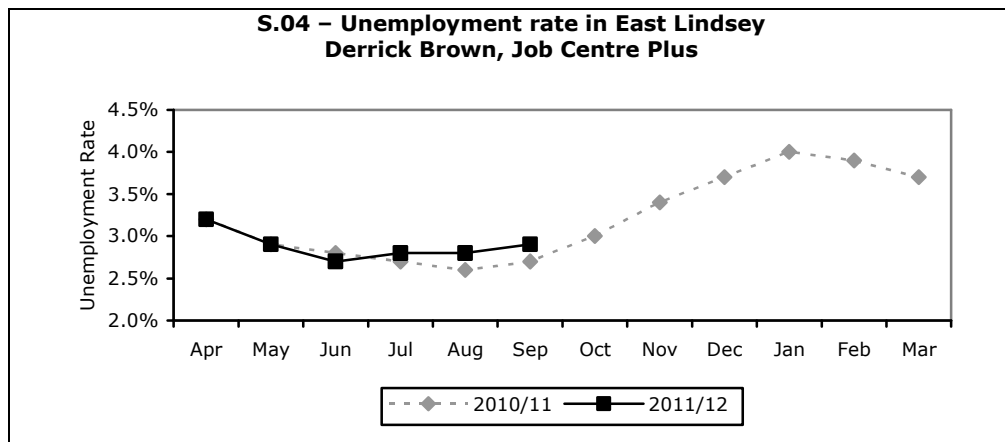
Performance: 32.20
(4,559 crimes)
Trend: ©
Lincolnshire Rank: 5/7
Best Performer (1/7): N. Kesteven
Worst Performer (7/7): Lincoln

The number of anti-social behaviour investigations begun with the issue of a written warning has continued to remain below the same number as at the same point last year. Although the year started off with 50 cases in the first quarter, this dropped to 27 in the second quarter.

Performance: 77
Trend: N/A

Network	Key Messages	Indicator Performance	Action Performance
Economic Prosperity, Education and Skills	There is currently no LSP Champion for this Priority due to the resignation of Sue Daley from the Board.		
Champion			
TBC			

Exceptions				Key Indicators		
Ref	Description	Lead Person & Partner	Description of Issue and Suggested Course of Action	Ref	Description	Performance
None				S.04	Unemployment rate in East Lindsey	For info. only
				S.05	Number of Job Seekers Allowance (JSA) Claimants in East Lindsey	For info. only



The unemployment rate has remained relatively static between May and September (increasing by only 0.1%) with only minor variations. This continues to follow a similar pattern to the prior year, albeit marginally higher. Below County average (3.2%).

Performance: 2.9% (2,434)
Trend: ☹️
Lincolnshire Rank: 4=
Best Performer (1/7): N. Kesteven
Worst Performer (7/7): Lincoln

The number of claimants has increased since last quarter and is currently above the previous year. However, a proportion of this could be due to changes being implemented to incapacity benefit recipients, which means they no longer qualify to receive it.

Performance: 2,430
Trend: ☹️

Network	Key Messages	Indicator Performance	Action Performance
Families, Children and Young People	There has been no progress with the development of this Network as the County Council has been fully engaged on restructuring and this is one of a number of areas of Children's Services work that has not progressed.		Not applicable
Champion	Due to this, there are no actions currently assigned to this network.		
Jennie Thornton, Lincolnshire County Council	We are currently awaiting updated figures for both NEET and GCSE results from Children's Services. These have been requested but not yet received.		

Exceptions				Key Indicators		
Ref	Description	Lead Person & Partner	Description of Issue and Suggested Course of Action	Ref	Description	Performance
None				S.08	16 to 18 year olds who are not in education, training or employment (NEET)	For info. only
				S.09	Achievement of 5 or more A*-C grades at GCSE or equivalent including English and Maths	For info. only

S.08 – 16 to 18 year olds who are not in education, training or employment (NEET) - Jennie Thornton, Lincolnshire County Council		S.09 – Achievement of 5 or more A*-C grades at GCSE, or equivalent, including English and Maths – Jennie Thornton, Lincolnshire County Council	
Data from March 2011 is the latest currently available. It shows a slight rise in the number of NEET across the District. East Lindsey is ranked 4 th with 4.4%, but is just less than half of the worst (Lincoln – 8.3%).	Performance: 4.4% Trend: ☹️ Lincolnshire Rank: 4/7 Best Performer (1/7): N. Kesteven Worst Performer (7/7): Lincoln	New data is due in Quarter 3. Very slight improvement between 2008/09 and 2009/10. The highest performing school in the District is Queen Elizabeth in Horncastle (100%), and the lowest is Mablethorpe Tennyson (28%). The LEA average is 59.2%.	Performance: 54% Trend: ☹️ Lincolnshire Rank: 5/7 Best Performer (1/7): W. Lindsey Worst Performer (7/7): Lincoln

Network		Key Messages		Indicator Performance		Action Performance	
Health and Wellbeing		<p>The LSP Champion for this Network is currently on maternity leave.</p> <p>Lynne McNiven, Assistant Director of Public Health at NHS Lincolnshire, will be providing an update at the LSP Executive Board Meeting on 10 November on the NHS Lincolnshire strategy to tackle rising obesity levels in the District.</p>					
Champion							
Ellie Hodgeon, NHS Lincolnshire							
Exceptions				Key Indicators			
Ref	Description	Lead Person & Partner	Description of Issue and Suggested Course of Action	Ref	Description	Performance	
S.07	Obesity in primary school aged children in Year 6	Lynne McNiven NHS Lincolnshire	The level of Year 6 children considered obese has increased since the previous year and still remains approximately 2.1% (140 children) above the target. Healthy eating programmes are still in place, aimed to bring this figure towards the target level.	S.07	Obesity in primary school aged children in Year 6	Red – performance is not meeting target	
O.08	Number of people seen by the Health Team for Health Improvement Programmes	James Brindle East Lindsey District Council	Currently below the target, but still expecting to meet the overall target. Performance should increase over the next two quarters as the full complement of staff is now in place.	O.08	Number of people seen by the Health Team for Health Improvement Programmes	Red – performance is not meeting target	
Missing Actions							
Ref	Description			Lead Person & Partner			
5.1	Develop and deliver a pilot 'Happy People Wellbeing Programme' in Louth			Peta Hill, Team Parish of Louth			
5.4	Undertake joined up health communication campaigns at targeted client groups			Allison Walker, NHS Lincolnshire			

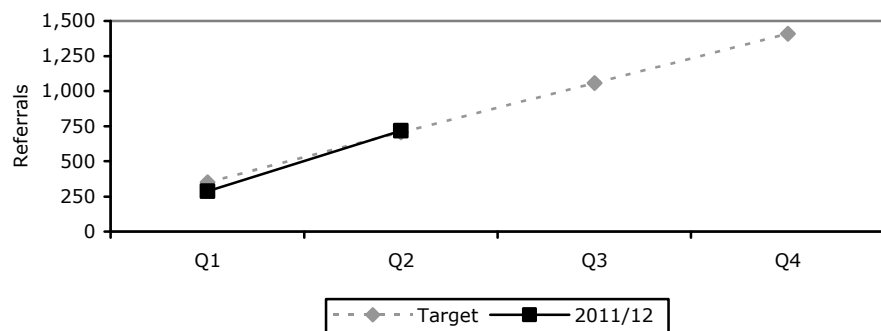
Related graphs on next page

S.07 – Obesity in primary school aged children in Year 6 Lynne McNiven, NHS Lincolnshire		O.08 – Number of people seen by the Health Team for Health Improvement Programmes (Cumulative) – James Brindle, East Lindsey District Council																									
<table border="1"> <caption>Data for S.07 Obesity</caption> <thead> <tr> <th>Year</th> <th>Actual %</th> <th>Target %</th> </tr> </thead> <tbody> <tr> <td>2008/09</td> <td>19.9%</td> <td>17.5%</td> </tr> <tr> <td>2009/10</td> <td>21.4%</td> <td>17.5%</td> </tr> </tbody> </table>		Year	Actual %	Target %	2008/09	19.9%	17.5%	2009/10	21.4%	17.5%	<table border="1"> <caption>Data for O.08 People Seen</caption> <thead> <tr> <th>Quarter</th> <th>2011/12</th> <th>Target</th> </tr> </thead> <tbody> <tr> <td>Q1</td> <td>250</td> <td>350</td> </tr> <tr> <td>Q2</td> <td>500</td> <td>650</td> </tr> <tr> <td>Q3</td> <td>-</td> <td>850</td> </tr> <tr> <td>Q4</td> <td>-</td> <td>1200</td> </tr> </tbody> </table>		Quarter	2011/12	Target	Q1	250	350	Q2	500	650	Q3	-	850	Q4	-	1200
Year	Actual %	Target %																									
2008/09	19.9%	17.5%																									
2009/10	21.4%	17.5%																									
Quarter	2011/12	Target																									
Q1	250	350																									
Q2	500	650																									
Q3	-	850																									
Q4	-	1200																									
The level of obesity in primary school aged children in Year 6 is showing an increase from 19.9% to 21.4%. This figure is reported annually, and the target is set at county level. The Lincolnshire average for 2009/10 was 19.5%	Performance: 21.4% Trend: ☹️ Lincolnshire Rank: 5/7 Best Performer (1/7): N. Kesteven Worst Performer (7/7): S. Holland	Currently below the target, but still expecting to meet the overall target. Performance should increase over the next two quarters as the full complement of staff is now in place.	Performance: 499 Trend: ☹️																								

Network		Key Messages		Indicator Performance		Action Performance	
Quality of Life for Older People		At the last Quality of Life for Older People Specialist Network meeting partners present felt that they were no longer able to provide accurate information on Intergenerational events as many were being run independently of the partnership now and the organisers were not providing this information.					
Champion							
Philippa Haresign, Age UK Lindsey							
Exceptions				Key Indicators			
Ref	Description	Lead Person & Partner	Description of Issue and Suggested Course of Action	Ref	Description	Performance	
6.3	Promote the Older People agenda using national, regional and local campaigns: a) Skegness and District Senior Forum	TBC Skegness and District Senior Forum	Due to resignation of Chairperson the committee is currently unable to attend any Quality of Life meeting or respond to any requests for information whilst they deal with internal issues. Partners have offered support to the Committee during this transition period.	0.03	Referrals generated through First Contact scheme	Green – on target	
6.5	Raise awareness of support available to carers through the East Lindsey District Council Carers Champion and Parish Champions	David Boath Lincolnshire County Council	New contacts identified but no update currently available on District and Parish Carers Champion. Lincolnshire Carers Partnership are following this up.	0.05a	Provision of intergenerational events: Number of persons taking part in intergenerational activities	No target set – baseline year	
6.7	Deliver the Bridge Project	Kevan Ray, pAsCaL	Although down to 2 Case Workers, target for next quarter (1 October – 30 December 2011) is still 52 referrals in North East Region.	0.05b	Provision of intergenerational events: Percentage that felt that the event had a positive effect on their perceptions of the generations	No cohesive return achievable	
				0.09	Carers receiving carers specific services as a percentage of the total number of carers known to the authority	Green – on target	

Related graphs on next page

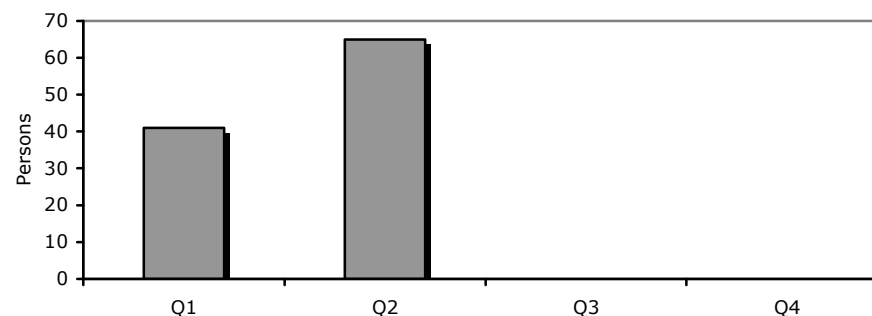
**O.03 – Referrals generated through the First Contact scheme (Cumulative)
Gary Brown, Age UK Lindsey**



Referrals have been increased in the last quarter, many of which have come through involvement in the 'Street Talking' initiative.

Performance: 717
Trend: ☺
Lincolnshire Rank: 1/7
Best Performer (1/7): E. Lindsey
Worst Performer (7/7): TBC

**O.05a – Number of persons who have taken part in intergenerational activities (Cumulative)
Peta Hill, Together In Generations**



Numbers have continued to increase, however this is only mapping the partnership-based events and there are other intergeneration activities being undertaken outside of TiG which do not monitor for this indicator.

Performance: 65
Trend: ☺

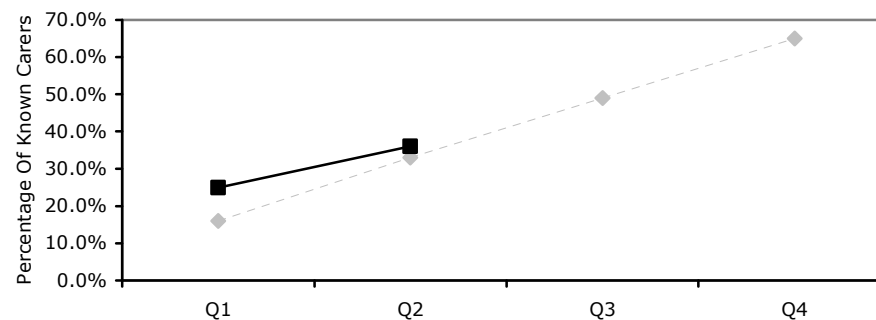
**O.05b – Percentage of persons taking part in intergenerational activities that felt that the event had a positive effect on the perceptions of the generations
Peta Hill, Together In Generations**

No data available

There are some issues around events being run independently of the partnership which do not collect these figures. No data currently available.

Performance: N/A
Trend: N/A

**O.09 – Carers receiving carers specific services as a percentage of the total number of carers known to the authority (Cumulative)
David Boath, Lincolnshire County Council**

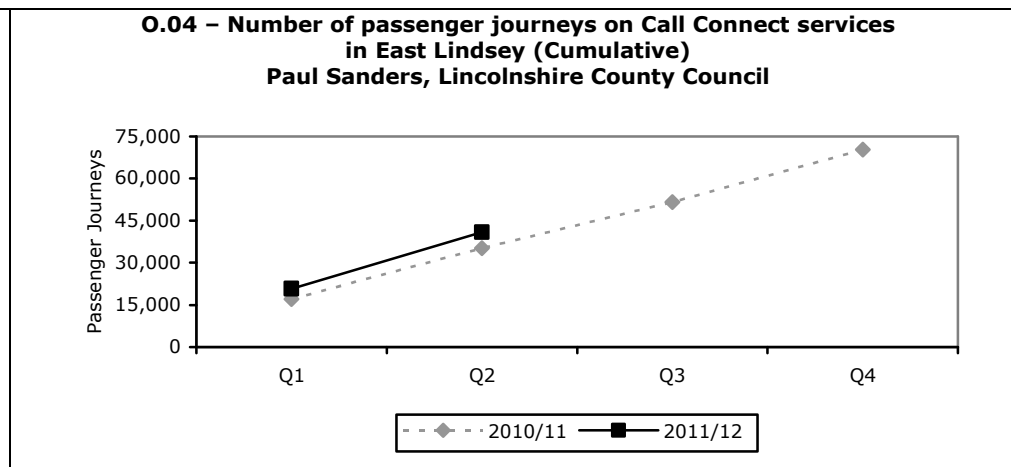
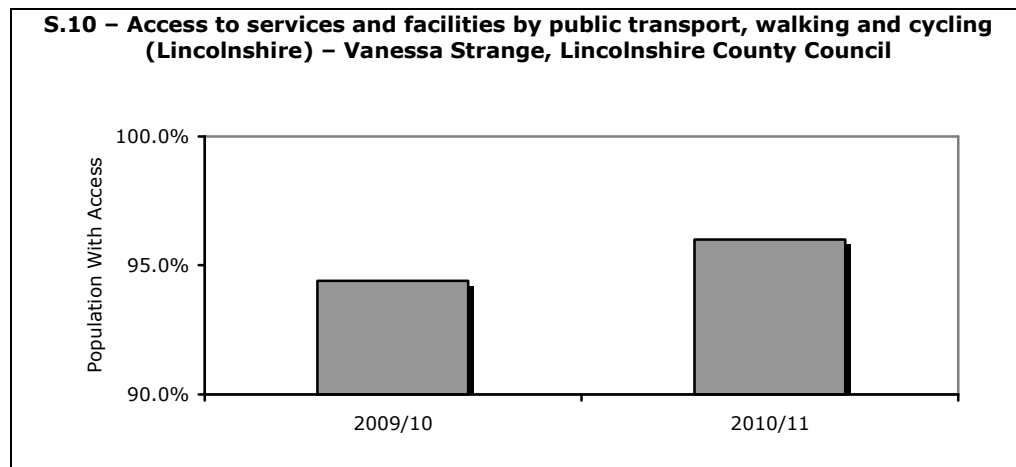


Since July 2011, Adult Social Work teams have been encouraged to refer carers to our Carers Service, as soon as they are identified. This has led to an increase in referral rates.

Performance: 36%
Trend: ☺

Network	Key Messages	Indicator Performance	Action Performance
Rural Services and Accessibility	There is no LSP Champion currently assigned to this group.		
Champion			
TBC			

Exceptions				Key Indicators		
Ref	Description	Lead Person & Partner	Description of Issue and Suggested Course of Action	Ref	Description	Performance
None				S.10	Access to services and facilities by public transport, walking and cycling	No target set
				O.04	Number of passenger journeys on Call Connect services in East Lindsey	Green – on target



The accessibility of services and facilities by public transport, walking and cycling in Lincolnshire has improved since the start of 2010/11 from 94.6% to 96.0%. Data only available at County level.

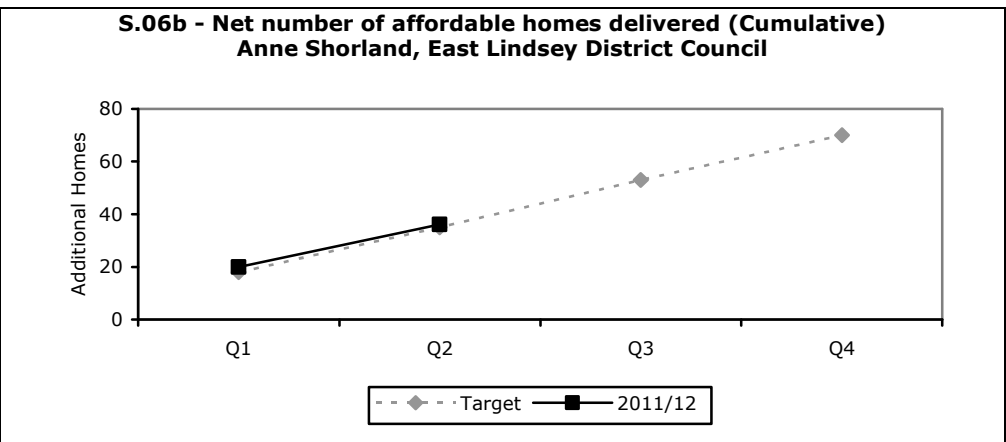
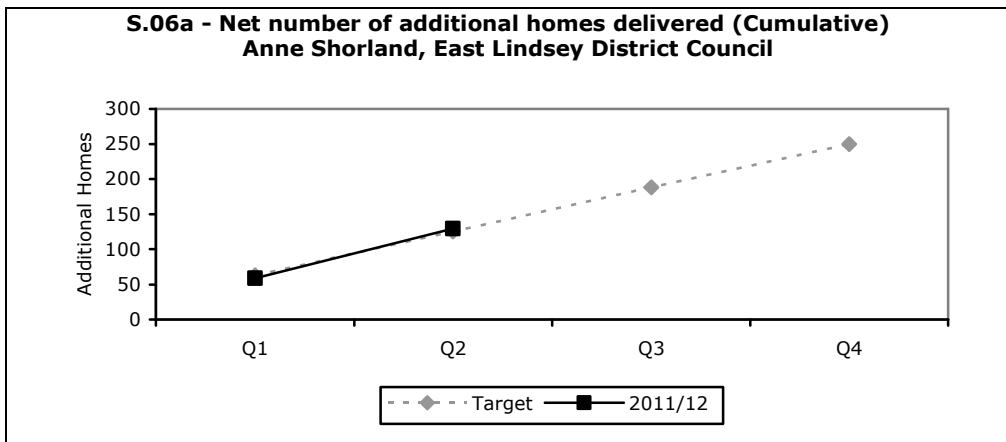
Performance: 96.0%
Trend: ☺

Number of passenger journeys has increased by over 5,000 on the same point last year. This may be due, in part, to the enhanced Call Connect service that has replaced Dial A Ride.

Performance: 40,898
Trend: ☺

Network	Indicator Performance	Action Performance	Exceptions			
Key Principles and Actions	<p>Q2</p>	<p>Q2</p>	Ref	Description	Lead Person & Partner	Description of Issue and Suggested Course of Action
Champion			None			
LSP Executive Board						
Key Indicators						
Ref	Description	Performance	Ref	Description	Performance	
S.01	Percentage of people who believe people from different backgrounds get on well together in their local area	Not due to be reported this quarter	O.07	Number of persons volunteering through Culture/Sports Force, South Lincs CVS volunteering opportunities and further partner volunteering opportunities	Baseline Year	
S.02	Percentage of people who feel that they can influence local decisions in their area	Not due to be reported this quarter	O.10a	Number of Town and Parish Plans in East Lindsey (since April 2008) completed	For info. only	
S.06a	Net number of additional homes delivered	Green – on target	O.10b	Number of Town and Parish Plans in East Lindsey (since April 2008) in progress	For info. only	
S.06b	Net number of affordable homes delivered	Green – on target				

Related graphs on next page

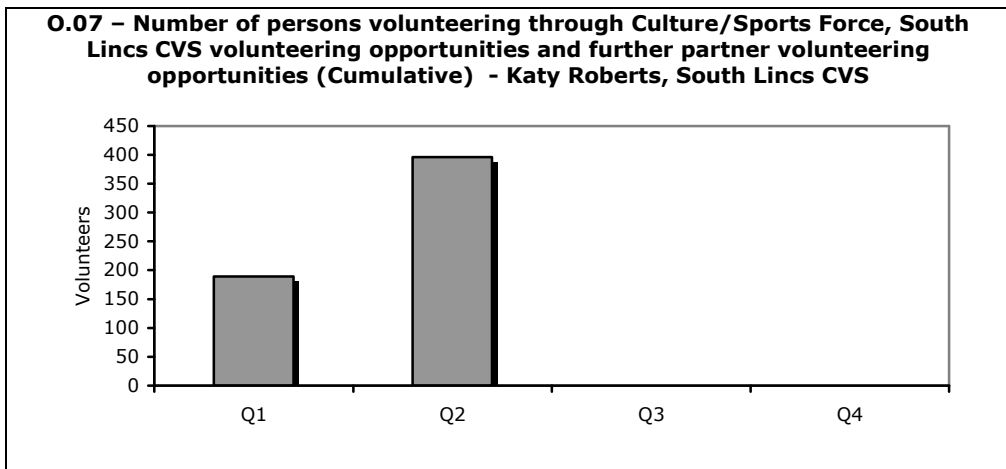


The number of additional homes has, up to the end of quarter 2, remained on target. However, due to the economic climate this is likely to slow down in Q3 and Q4 and is therefore unlikely to meet its annual target.

Performance: 129
Trend: ☺

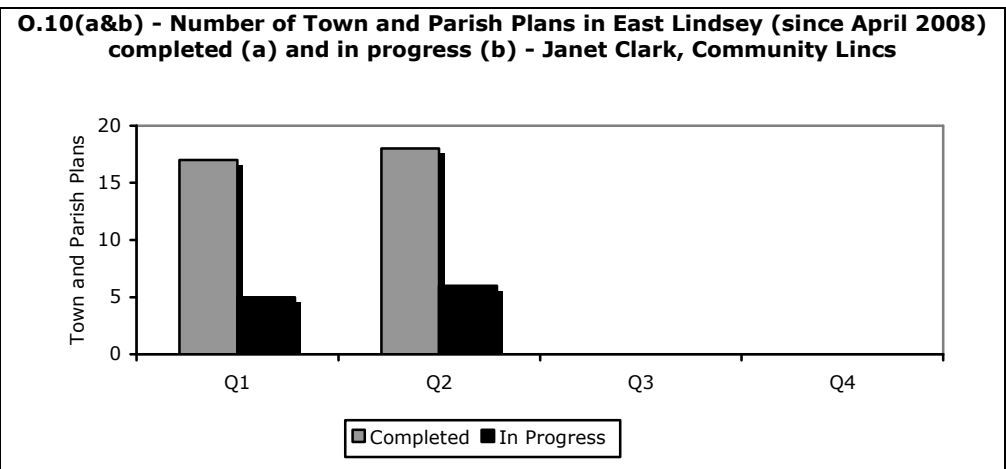
The number of affordable homes delivered in the District is currently above target and is expected to continue to remain on target to the financial years' end.

Performance: 36
Trend: ☺



Between Culture/Sports Force and South Lincs CVS, a total of 396 volunteers have been placed since the start of 2011/12.

Performance: 396
Trend: ☺



A total of 18 Town and Parish Plans have been completed within the District since 2008. Since the adoption of the Parish Planning Protocol in November 2008, the LSP has provided feedback on each Plan it has received. A total of 6 Plans are currently in progress. This is an improvement on last quarter where 17 plans had been completed since 2008 and 5 were in progress.

Performance (a): 18
Trend (a): ☺
Performance (b): 6
Trend (b): ☺