



LINCS BUILDING  
CONSULTANCY

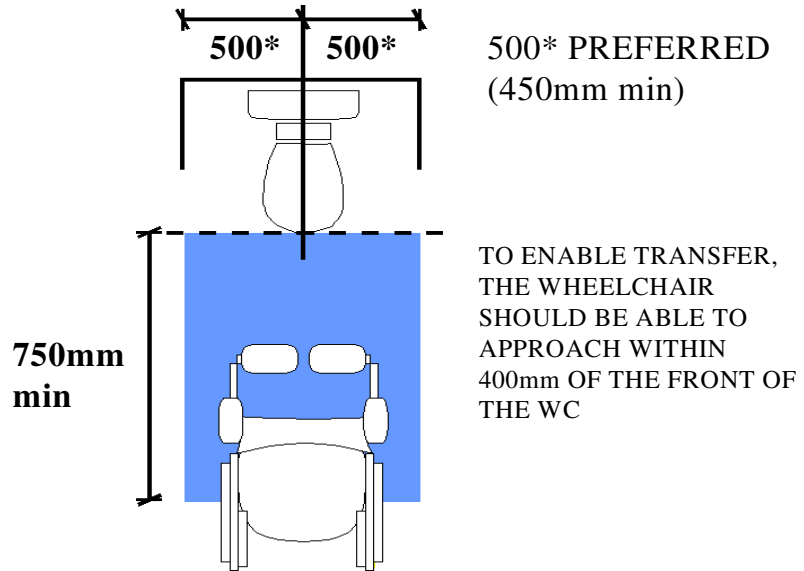
## **Guidance Note No. 12**

Part M – Dwellings

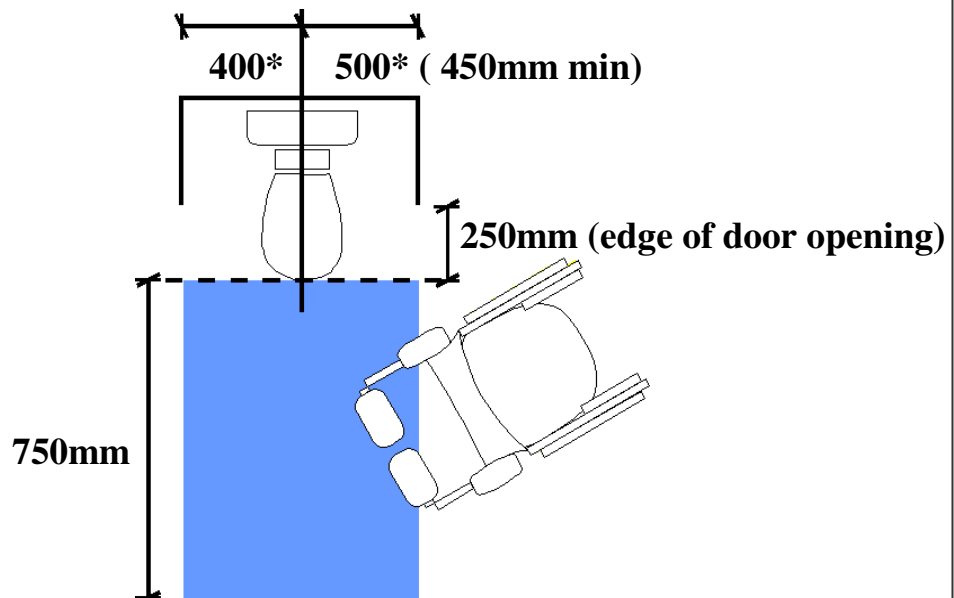
WC Provision in the  
Entrance Storey



## CLEAR SPACE FOR FRONTAL ACCESS TO WC



## CLEAR SPACE FOR OBLIQUE ACCESS TO WC





FS58945



## **Lincs Building Consultancy**

**Tedder Hall  
Manby Park  
Louth  
Lincolnshire  
LN11 8UP**

**Tel: 08707 551696  
Fax: 01507 327069  
[www.e-lindsey.gov.uk](http://www.e-lindsey.gov.uk)  
E-mail: [lbc@lincsbc.gov.uk](mailto:lbc@lincsbc.gov.uk)**

If you would like to receive this information in another language or in another format, such as large print, Braille or on an audio tape, please contact Administration at either of the offices shown above.

Please note that these guidance notes are for advice only and may not cover all situations. It is your responsibility to ensure that they are appropriate for use in your particular circumstances.